



THE TERRACE

45 MODERN TOWNHOMES



OWN A BETTER VIEW AT THE TERRACE

Situated high above DTLA, a new gated community awakens the senses and inspires movement throughout your day. Featuring 45 3-Story townhomes each with stunning views, chic interiors and easy access to work and play, The Terrace is guaranteed to change how you live LA.



SPECTACULAR SPACE

- Approx. 1,800 SF
- 3 Bedroom
- 2.5 Bath
- Balconies
- Patios

STUNNING FEATURES

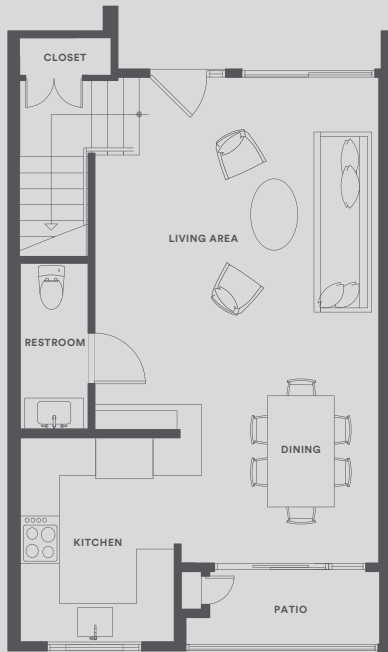
- Breathtaking Views
- Modern Interiors
- Bosch Appliances
- Walk-in Closets
- Gated Community
- Secure Parking

INCREDIBLE ACCESS

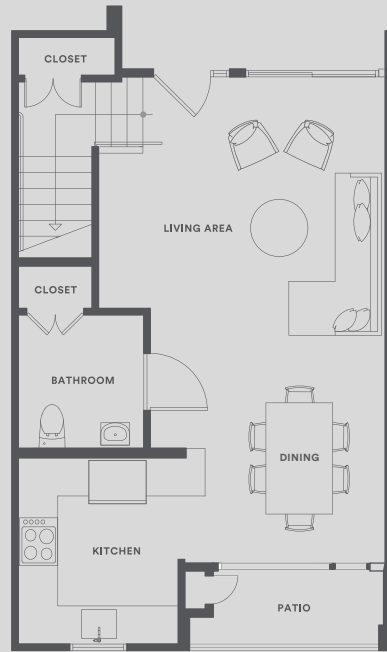
- Downtown LA
- Dodger Stadium
- Echo Park, Silver Lake
- 110, 101 & 5 Freeway

FLOORPLANS

LEVEL 1

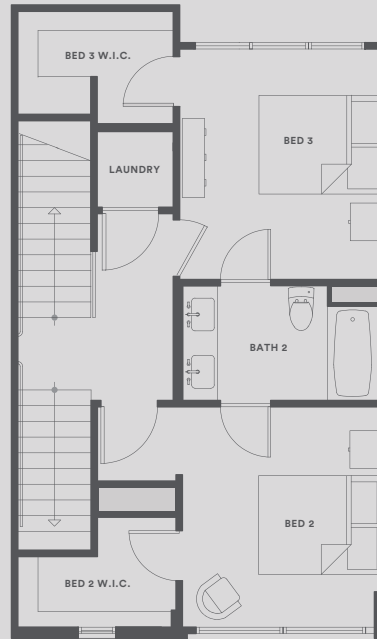


PLAN A

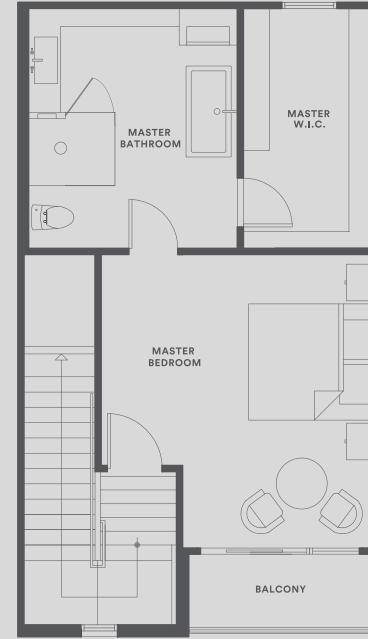


PLAN B

LEVEL 2

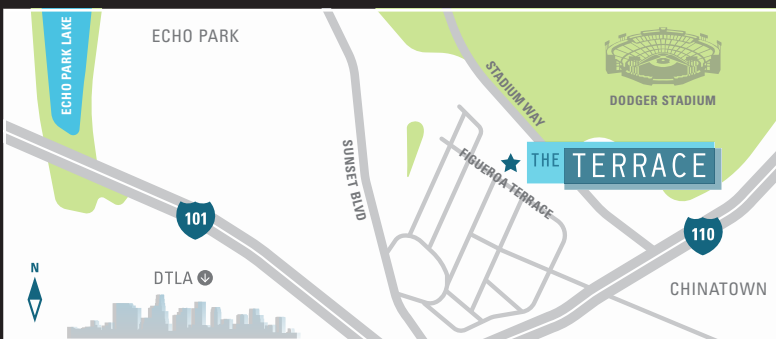
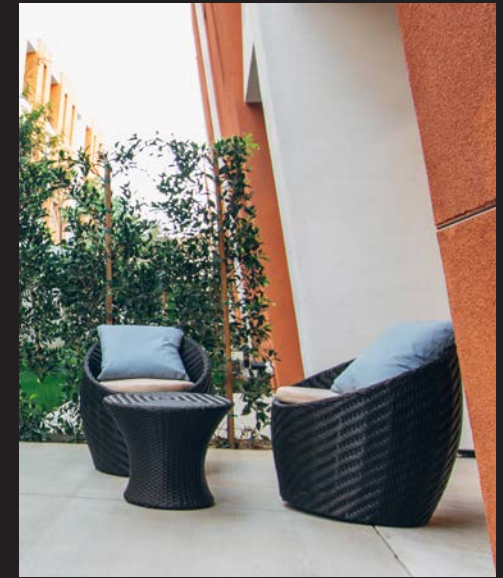


LEVEL 3



STEP UP. STEP OUT.

Centrally located between DTLA, Echo Park, Chinatown and Silver Lake, The Terrace puts you right where you want to be.



EXCLUSIVELY REPRESENTED BY



CALBRE# 02030086

In a continuous effort to make improvements, The Terrace, reserves the right to change prices, option items, floor plan, features, exterior designs, materials and specification without prior notice or obligation. Price, square footage, amenities, and terms are subject to change. All renderings, floorplans, and maps are artist's conception and are not intended to be an actual depiction of the building or walls. Photography does not depict racial preferences.

CONTACT US

1015 Figueroa Terrace
Los Angeles, CA 90012

T (213) 407-5353

info@TheTerraceLA.com
TheTerraceLA.com